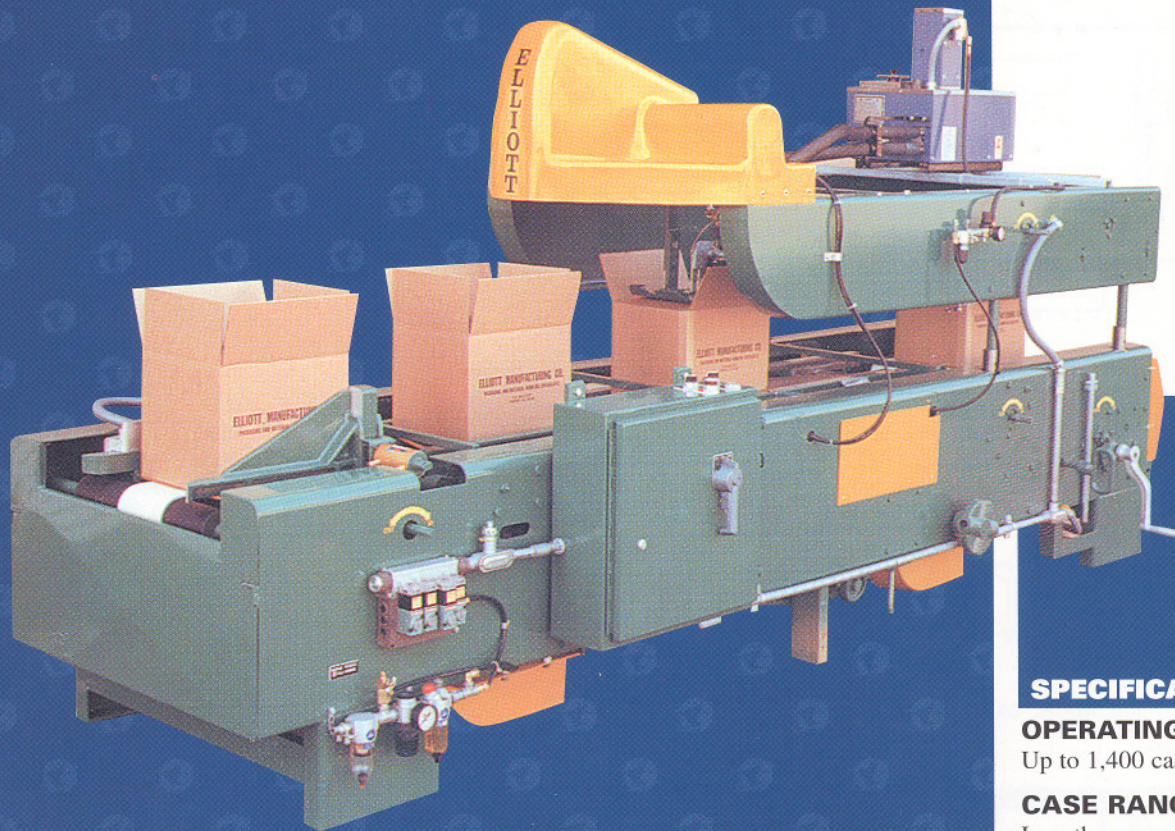


76-10 FULLY AUTOMATIC TOP & BOTTOM HOT MELT CASE SEALER



SPECIFICATIONS

OPERATING SPEEDS

Up to 1,400 cases per hour

CASE RANGE

Length	8" to 18"
Width	6" to 16"
Height	4" to 16"

OVERALL DIMENSIONS

Length	11'-2"
Width	38"
Infeed Height	24"

ELECTRICAL

460/230 volt, 3 phase, 60 hz
NEMA 12 electrical

The Elliott Model 76-10 Fully Automatic Hot Melt Case Sealer is a compact machine for sealing a wide range of case sizes in a limited space. It is quickly adjustable for changing case sizes. The Model 76-10 is built within a single unitized machine frame. Squared cases are assured by case transfer system.

Comes complete with:

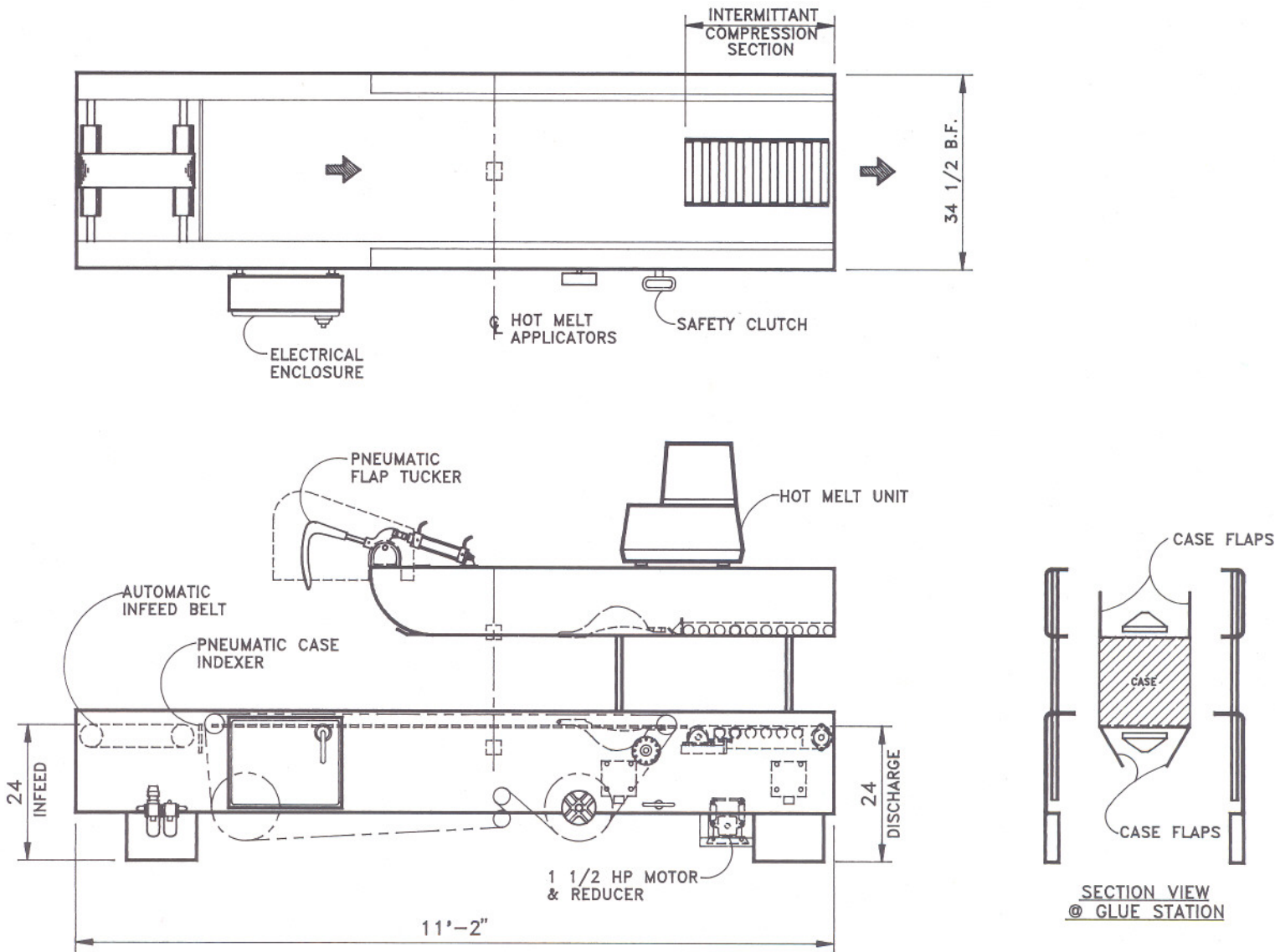
- Automatic case feeder indexer
- Right-hand quick change crank adjustments
- Engraved legend plates for switch circuitry
- No case/no kick automatic flap tucker
- Safety guards
- Motors, drives, electrical and pneumatic control
- Identification and function plates



Elliott
MANUFACTURING

2554 S. Cherry Fresno, CA 93705 559-233-6233
P.O. Box 11277 Fresno, CA 93772 559-233-6633 fax
E-mail: elliottinfo@elliott-mfg.com
www.elliott-mfg.com

76-10 FULLY AUTOMATIC TOP & BOTTOM HOT MELT CASE SEALER



Elliott Since 1929
MANUFACTURING

2664 S. Cherry, Fresno, CA 93706 550-233-6235
 P.O. Box 11277, Fresno, CA 93772 559-233-9833 fax
 E-mail: elliottmfg@elliott-mfg.com
www.elliott-mfg.com