

## MCAM-1300

### Manual Cartridge Assembly Machine

The Massman MCAM-1300 is a semi-automatic, manual load, pleated media first and last pleat seaming machine. It seams cellulose, synthetic or wire back media slit widths up to 13-inches (330mm), pleat heights greater than 1.5-inches (38mm) upon request, and media thickness greater than 0.125-inches (3.2mm). This is PLC controlled with HMI interfaced servos for automatic changeover adjustments within 20-seconds. The cycle speed is operator dependent up to 30ppm.



*\*Shown with optional discharge conveyor and enclosed wireway.*

#### AVAILABLE MODELS

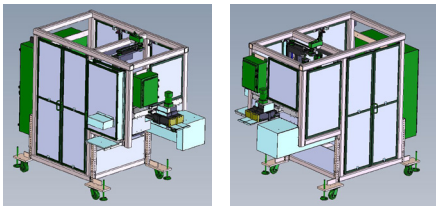
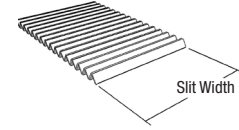
- MCAM-1300-aU (Ultrasonic Weld Seam)
- MCAM-1300-C (Metal Clip Seam)
- MCAM-1300-H (Hot Melt Seam)

*Over the past 30 years, Massman filter assembly systems have earned a reputation for proven performance and continuous improvement. With a wide range of product capabilities, Massman has the right solution to help you achieve maximum efficiency and lower production costs.*

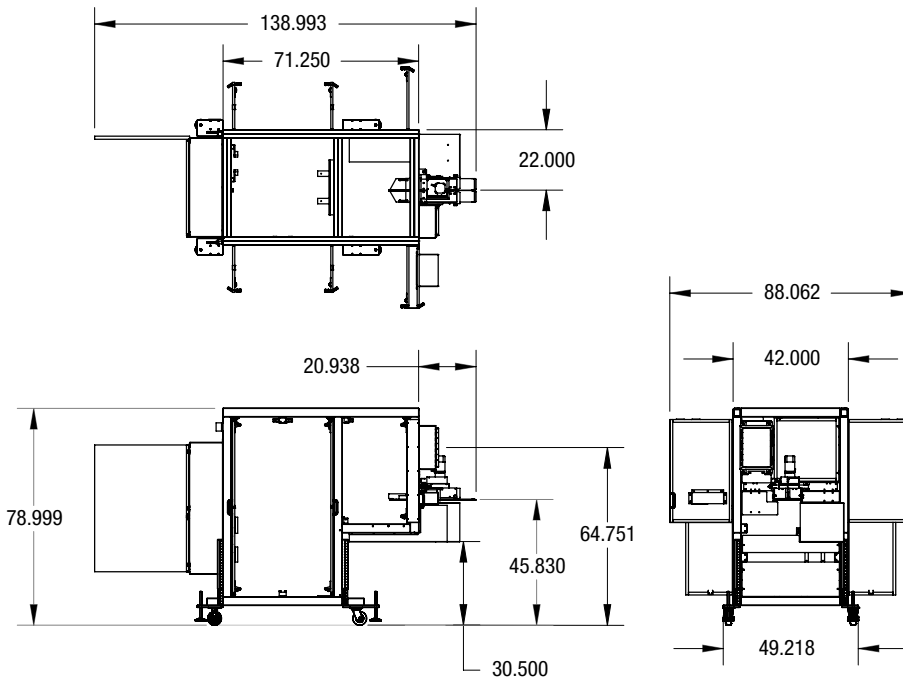
## MCAM-1300 Specifications

### MCAM-1300 Design Capability

CHARACTERISTIC	MCAM-aU	MCAM-C	MCAM-H
Slit / Length	1.50" - 13.00" (38mm - 330mm)		
Pleat Height	0.38" - 1.0"+ (10mm - 25mm)		
Media Thickness	0.020" - 0.060", and up to 0.125" (0.50mm - 1.5mm, and up to 3.2mm)		
Cycle Speed	Up to 25 - 30ppm		



### MCAM-1300 Dimensional Layout



\* Listed dimensions are only for reference and are subject to change without notice.

\*\* MCAM-1300 equipment can conform to OSHA, UL, CUL, CSA, NFPA and CE standards.

### Features

- Seams single and multi-layer media, cellulose, synthetic and wire back material
- For water, air, oil, alcohol and fuel filtration, as well as medical applications
- World class manufacturing built to your country's build standards
- Each part is stamped with a unique part number and then painted, plated or anodized
- 24-hour phone support
- Dedicated spare parts department
- After sale onsite service